

KETLEY

BRICK

Bricks, Slips and Pavers

Staffordshire Clay Building Products





100 Year Tradition

Ketley was founded over 100 years ago and forms part of the Hinton Perry & Davenhill family business, which began making Dreadnought Clay Roof Tiles in 1805. The company has a long tradition of clay craft and a passion to create the finest natural clay building materials.

For further information on Dreadnought Tiles visit the website www.dreadnought-tiles.co.uk

Clay Specialists

At Ketley we manufacture Staffordshire clay bricks and clay pavers which we make from Etruria Marl, the strongest clay. This focus and depth of experience is unique and enables us to tackle even the most demanding requirements for specialist clay bricks and pavers. All Ketley products are made to engineering brick specifications.



Ketley have recently introduced extruded brickslips and quarry tiles which are manufactured in a range of colours including the 3 traditional Ketley colours. The brick slips are available in a smooth, sanded or rustic finish and with only 30% of the embodied carbon of a traditional cut brick slip they are a highly durable, sustainable and cost effective choice for construction.

Manufacturing Process

Ketley Bricks and Pavers conform to BS EN 771-1:2011. Our modern plant gives us a unique level of flexibility and range for the manufacture of specials.

At Ketley Brick Company we combine the traditional values embodied in our 100 year history with the determination to be a highly efficient manufacturer of consistently high quality product.

Quality and Service

Ketley is quality assured to ISO 9001:2008 and we pride ourselves on our tradition, our commitment to quality and Ketley Brick's 100 year reputation for excellence.

One hundred year continuity of family ownership ensures an enthusiastic sales support team with unrivalled experience. You will find us easily accessible and ready to give advice from design stage to completion of a project.

We also have a team of experts across the country who are available to provide advice and to discuss the details and requirements for your projects.

Contact us to view completed projects using Ketley Bricks and Pavers in your area or for any additional information or advice.

The Environment and Sustainability

We take our environmental commitments seriously and exceed all the necessary legislation in this area. Our modern plant operates an Environmental Management System accredited to ISO 14001:2004 and we are consistently working to improve our energy and production efficiency.

Sustainable development is about delivering a better quality of life for everyone, now and for generations to come. Our task is to use resources as efficiently as possible, to reduce waste, to minimise the energy used in manufacture and to ensure that our products have the longest possible lifespan.

Ketley Bricks manufactured over 100 years ago are still in use today. This surely demonstrates their sustainability. We believe that the most reliable measure of sustainability is to calculate the embodied energy in production, divided by the useful life of the products.





Ketley Brick

Ketley Brick - The Company 1

Ketley Clay Pavers 3

Plain Staffordshire Blue 5

Plain Staffordshire Red 6

Plain Staffordshire Brown Brindle 7

Patterned Staffordshire Pavers 8

Paver Specifications 10

Quarry Tiles 11

Ketley Clay Bricks 13

Staffordshire Blue Class "A" Brick 15

Staffordshire Brown Brindle Class "A" Brick 17

Staffordshire Red Class "A" Brick 19

Brick Slips 21

Special Shaped Bricks 23

Creasing Tiles 24

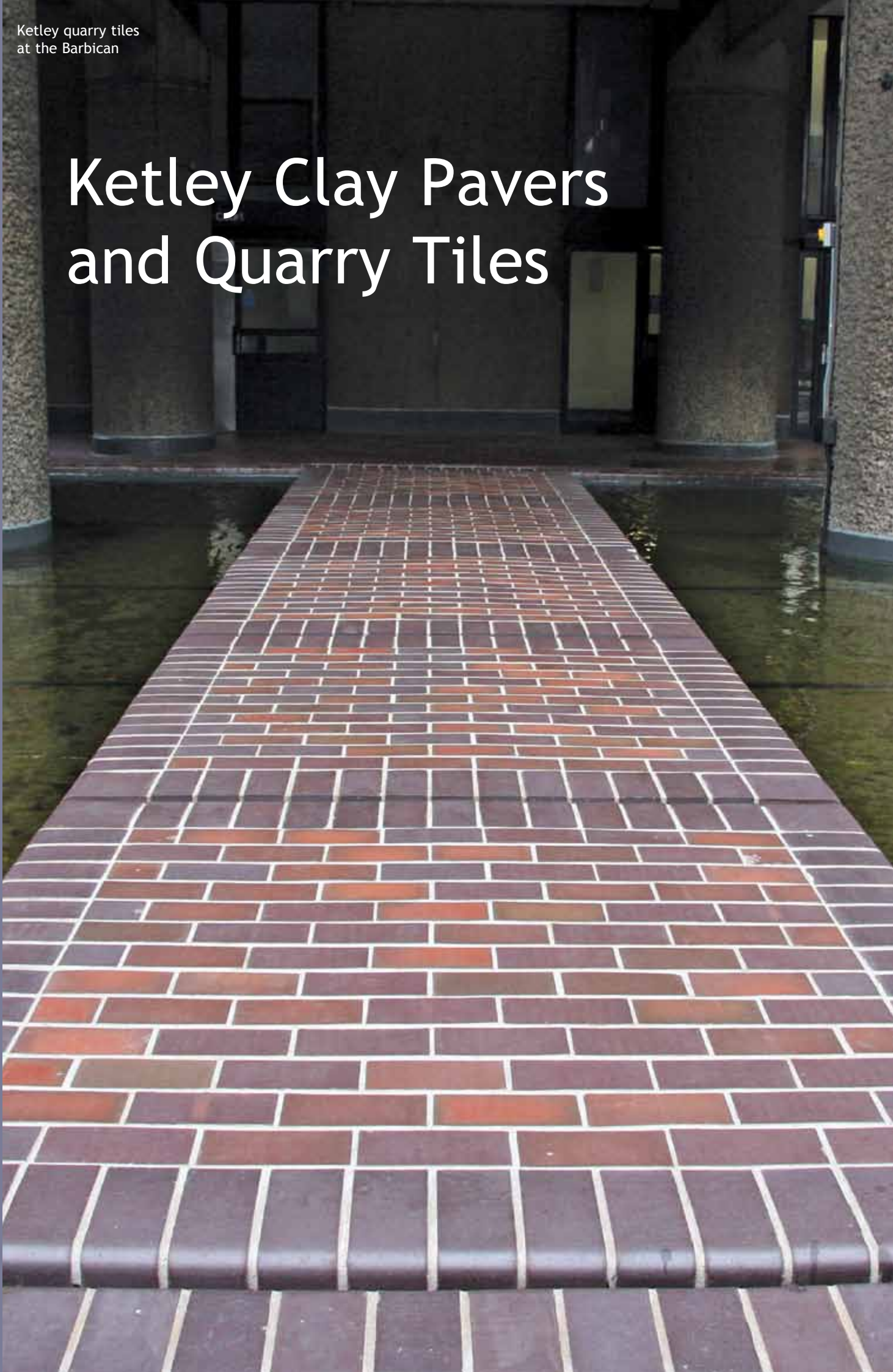
Brick Slip Specifications 25

Brick Specifications 26



Ketley quarry tiles
at the Barbican

Ketley Clay Pavers and Quarry Tiles





Ketley Clay Pavers have an inherent natural beauty and strength. Widely used by the Victorians beside their canal and railway systems and in their industrial and urban developments, Ketley Pavers have passed the ultimate test - **“the test of time”**.

The continuing popularity of Ketley Pavers lies in their depth and consistency of colour permanence and their strength and durability. With a wide range of patterns, designs and natural colour, Ketley Pavers provide solutions that add value and beauty to any built environment.

Natural Beauty in Clay

Colours that do not fade over time

High durability in heavy use areas

Available in traditional patterns

With a full range of specials and fittings

With most paving projects over 80% of the expense is in the laying and fitting, so choosing a high quality clay paver will only marginally affect the overall cost.



Plain Staffordshire Blue

Inherent natural beauty and strength

Manufactured to the same specification for over 100 years, Ketley Staffordshire Blues are the original product with a rich distinctive colour that is permanent. Made from the finest Etruria Marl fired at over 1130°, Ketley Pavers are of unrivalled strength and durability.



Dragfaced Chamfered



Dragfaced Square edged

© 2009 Ketley Staffordshire Blue
Clay Pavers - New Zealand - www.pavezone.com



Samples: Illustrations in this publication are as accurate as the printing process will permit and will reflect lighting conditions at the time the photographs were taken. To appreciate fully the appearance of the bricks please request samples from our Sales office on 01384 78361 or info@ketley-brick.co.uk, these are freely available and will provide a better guide. All our products are made from naturally occurring materials and therefore a certain degree of colour variation is an inherent feature of the products.



Plain Staffordshire Red

Permanent natural colour and strength

Ketley Staffordshire Red Pavers provide a rich colour which won't fade over time. They are highly durable and justify a classification as Heavy Duty - suitable for channelised traffic flow in public pedestrianised areas.



Dragfaced Chamfered



Dragfaced Square edged





Plain Staffordshire Brown Brindle

Ketley Brown Brindle Pavers are a unique product, the result of careful control of the kiln atmosphere during the firing process, which produces an aesthetically pleasing random colour variation and an organic appearance when laid.

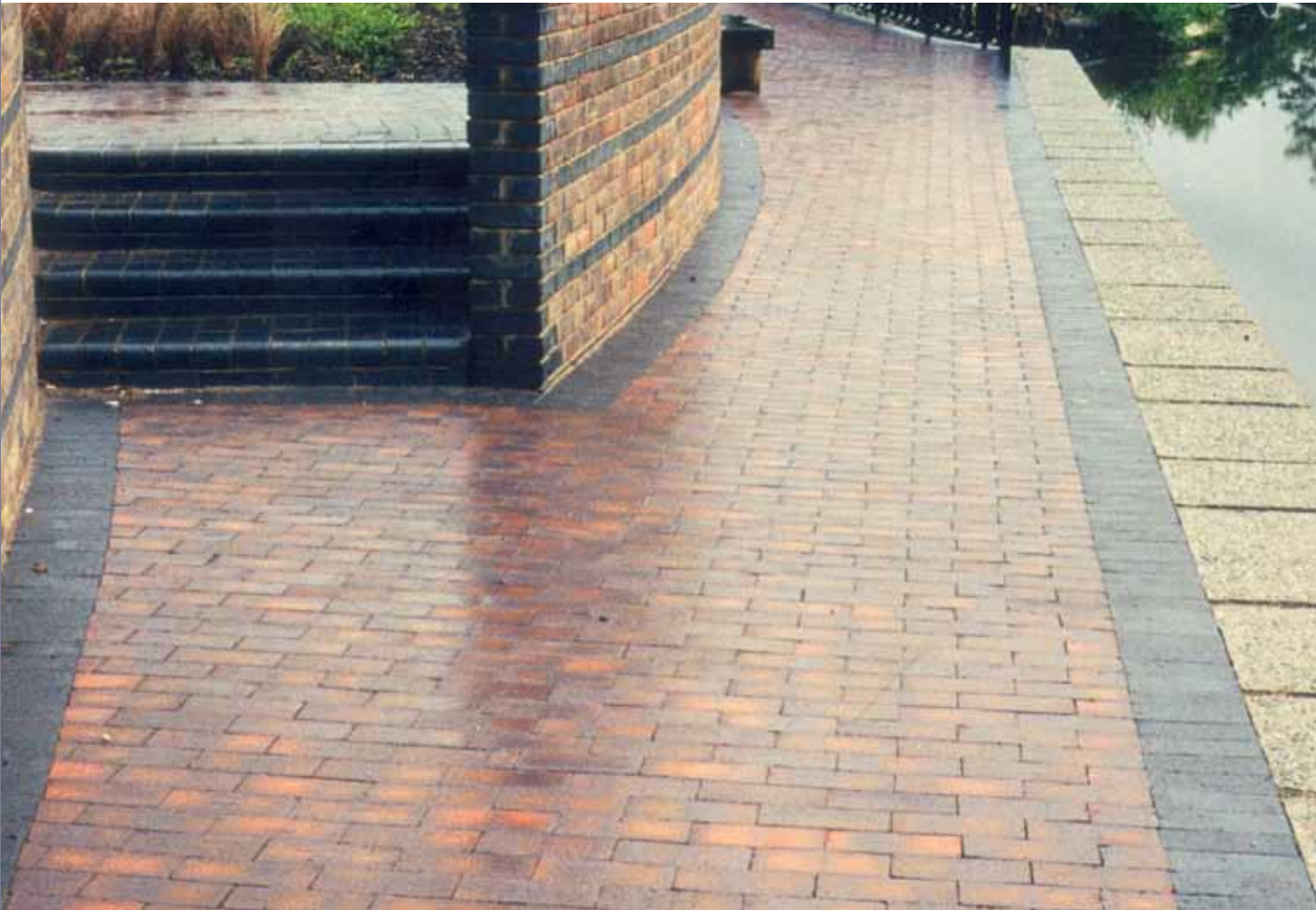
Ketley Brown Brindle Pavers are the authentic traditional product, a perfect match for restoration projects such as canal towpaths where they are widely used.



Dragfaced Chamfered



Dragfaced Square edged





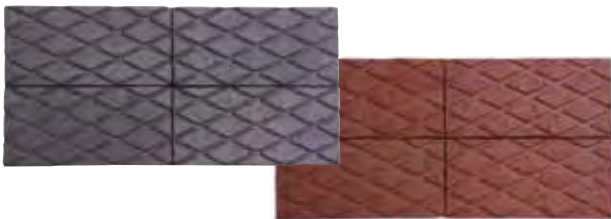
Patterned Staffordshire Pavers

Typical of the Victorian era, Ketley Staffordshire Blue Diamond Chequered Pavers are the authentic product, the perfect match for restoration or an ideal means of achieving a traditional, period look.

Ketley Chequered and Panelled Pavers were widely used by the Victorians beside their canal and railway systems and in their industrial and urban developments. They have passed the ultimate test - the test of time.

Patterned designs not only shed water rapidly and provide enhanced traction, but their traditional designs add a long established look and a strong aesthetic appeal.

Ketley Patterned Pavers are also particularly effective when used to break up large areas, by providing contrasting banding or by adding interest and texture.



Staffordshire Diamond Chequered Paver Square Edged

Available in Blue, Red & Brown Brindle



Staffordshire 2 Panel Paver Chamfered

Available in Blue, Red & Brown Brindle



Staffordshire 8 Panel Paver Chamfered

Available in Blue, Red & Brown Brindle



Staffordshire Star Paver Chamfered

Available in Blue, Red & Brown Brindle

Samples: Illustrations in this publication are as accurate as the printing process will permit and will reflect lighting conditions at the time the photographs were taken. To appreciate fully the appearance of the bricks please request samples from our Sales office on **01384 78361** or **info@ketley-brick.co.uk**, these are freely available and will provide a better guide. All our products are made from naturally occurring materials and therefore a certain degree of colour variation is an inherent feature of the products.

Plain and Patterned Paver Specifications

| | |
|----------------------|---|
| Colour: | Staffordshire Blue, Red and Brown Brindle |
| Finish: | Dragfaced or Patterned |
| Raw Material: | Etruria Marl |
| Manufacture: | Extruded, Wirecut and fired above 1130°C |
| Bulk Density: | 2,300 kg/m ³ |

Performance Data:
BS EN 1344 : 2002

| | |
|---------------------------------|-------|
| Size Range | R1 |
| Mean transverse Breaking load | T4 |
| Unpolished slip/skid resistance | U3 |
| Abrasion resistance | A3 |
| Freeze/thaw resistance | FP100 |

Plain Dragfaced Pavers

Sizes and Coverage

| Work Size mm | Pattern | Pack Weight | No. Per Pallet | Units per m ² | |
|--------------|--------------------------|-------------|----------------|--------------------------|-----------------------------------|
| | | | | Rigid with 10mm Joint | Flexible Butt Jointed (3mm Joint) |
| 215x102.5x50 | Square Edged | 1300kg | 500 | 40 | 44 |
| 215x102.5x65 | Square Edged | 1320kg | 400 | 40 | 44 |
| 200x100x50 | Square Edged & Chamfered | 1150kg | 500 | 43 | 48 |
| 200x100x65 | Square Edged & Chamfered | 1200kg | 400 | 43 | 48 |

Patterned Staffordshire Pavers

Sizes and Coverage

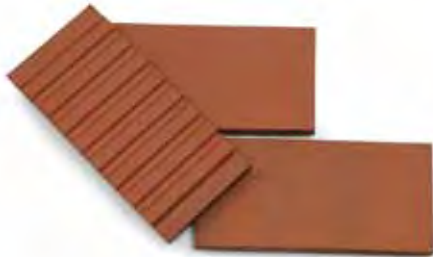
| Work Size mm | Pattern | Pack Weight | No. Per Pallet | Units per m ² | |
|----------------|-----------------------------|-------------|----------------|--------------------------|-----------------------------------|
| | | | | Rigid with 10mm Joint | Flexible Butt Jointed (3mm Joint) |
| 220 x 105 x 50 | Diam Cheq/2 or 8 panel | 1300kg | 500 | 38 | 42 |
| 220 x 105 x 65 | Diam Cheq/2 or 8 panel | 1360kg | 400 | 38 | 42 |
| 200 x 100 x 50 | Diam Cheq/Star/2 or 8 panel | 1150kg | 500 | 43 | 48 |
| 200 x 100 x 65 | Diam Cheq/Star/2 or 8 panel | 1200kg | 400 | 43 | 48 |



2016 Brick Award Winner Ketley staffs blue quarry tiles inside merge with Ketley staffs blue pavers outside at Maggie's Manchester, designed by Foster + Partners



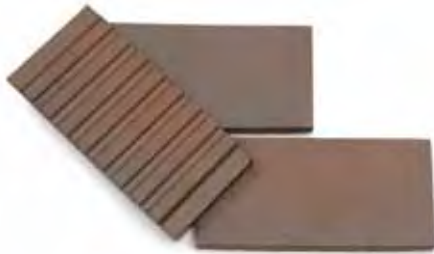
Quarry Tiles



Staffordshire Red



Staffordshire Light Multi



Staffordshire Dark Multi



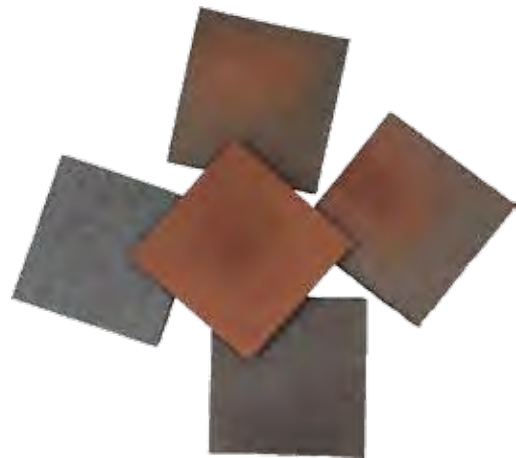
Staffordshire Brown Brindle



Staffordshire Blue

Ketley Quarry Tiles, sometimes known also as paving tiles, are available in a range of natural clay colours and offer similar performance to traditional quarry tiles. For restoration projects Ketley Quarry Tiles offer a very good match to the discontinued Hawkins and Dennis Ruabon Quarry tiles which can be found in many parts of the UK. They offer excellent slip resistance and suit most flooring and wall cladding applications indoors or externally, in commercial premises or the home.

18mm thick, they are manufactured from the proven Etruria Marl clay, which becomes dense when fired, and is hard wearing and resistant to acids, alkalis, oils, grease and fats. In pendulum tests where anything higher than 36 indicates low slip potential, they score a dry value average of 63 and a wet value average of 55 meaning they have excellent slip resistance in both wet and dry conditions. They can be classified as R11 and Category C which is the highest rating for slip resistance according to BS EN 14411.



All colours available in either square or rectangle



Samples: Illustrations in this publication are as accurate as the printing process will permit and will reflect lighting conditions at the time the photographs were taken. To appreciate fully the appearance of the bricks please request samples from our Sales office on **01384 78361** or **info@ketley-brick.co.uk**, these are freely available and will provide a better guide. All our products are made from naturally occurring materials and therefore a certain degree of colour variation is an inherent feature of the products.



Technical Specifications for Quarry Tiles

COLOURS: Staffordshire Red / Staffordshire Light Multi / Staffordshire Dark Multi / Staffordshire Brown Brindle / Staffordshire Blue

TEXTURE: Smooth **MANUFACTURE:** Extruded **REVERSE KEY:** Ribbed key to a depth of 2.5mm

PACKING ON PALLETS: 1350 pieces on a pallet for 215 x 102.5 x 18mm size 1890 for 215 x 65 x 18mm size

COVERAGE: per m2 - 40 for 215 x 102.5mm size with 10mm joint 60 for the 215 x 65mm size with a 10mm joint

| PROPERTIES | BS EN 14411 GROUP A1b REQUIREMENT | TYPICAL VALUES |
|--|--|--|
| Dimensions and surface quality Length x Width 215mm x 102.5mm Thickness 18mm Straightness of sides Rectangularity Surface flatness | Average tolerance $\pm 2\%$ to an individual maximum of $\pm 4\text{mm}$ Average tolerance is $\pm 10\%$ within $\pm 0.6\%$ within $\pm 1\%$ Centre curvature $\pm 1.5\%$ Edge curvature $\pm 1.5\%$ Warpage $\pm 1.5\%$ | length 215mm +/- 2.5mm width 102.5mm +/- 1.5mm +/- 1mm tolerance 0.2% 0.2% Centre curvature +/- 1.5mm Edge curvature +/- 1mm Warpage +/- 1.5mm |
| Physical properties Water absorption Breaking strength Resistance to deep abrasion Frost resistance Slip resistance Bond strength Moisture expansion Reaction to fire | 0.5 < 3% Min 1100N Max 275mm ³ Value to be stated Pendulum test results exceeding 36 indicate low slip potential Inclined platform in shod conditions Inclined platform in wet barefoot conditions C2 Cementitious adhesives Reaction resin adhesives Mortar No requirement Value to be stated | 1.50% 2995N 106mm ³ No damage after 100 cycles Dry value av of 63 Wet value av of 55 Category R11 which indicates that they are considered not to be slippery in wet or greasy conditions. Category C which is the highest rating for slip resistance. >1.0 N/mm ² >2.0 N/mm ² 0.15 N/mm ² Negligible A1 |
| Chemical properties Resistance to staining | Minimum requirement 3 | Paste stain 5 Chemical/oxydising stain 4 Film stain 3 |

Staffordshire Bricks

Class A Facing Bricks and Special Bricks
Staffordshire Blue, Staffordshire Brown Brindle, Staffordshire Red.



Where quality and durability are paramount, Ketley Bricks offer solid and perforated bricks, tried and tested in the toughest environments. Ketley Staffordshire Blue Bricks have always been regarded as the mark of durability and strength, making them the choice for highly demanding environments. They are an excellent choice for use in textured facades where more than one face of the brick is exposed to the weather.

Ketley Bricks and Specials also add character and distinction to a project. Whether it be to add contrast and detail in brickwork as a feature brick or to make a strong impression with contrasting banding or geometric patterns, Ketley Brick offer a reliable choice. We manufacture a wide range of Standard Specials as well as a bespoke service for more demanding requirements.

Ketley Bricks are available in metric and imperial sizes in a range of natural Staffordshire colours. They are a traditional Staffordshire product and are ideal for refurbishment where a close match to the original bricks is essential.

“Ketley Bricks have a natural beauty and a surface quality which makes their colour appear to change in different weather conditions. They take on a more reflective appearance in dry sunny weather and appear darker in wet conditions”.

Stefan Mannewitz, Project Architect
at Karakusevic Carson Architects.





Staffordshire Blue 'Class A' Facing Bricks



Conform to BS EN 771-1: 2011
 Class A.
 Solid or Perforated.
 Uniformly high crushing strength.
 Low water absorption.
 Resistant to acids, alkalis and abrasion.

Sizes:

215x102.5x50 mm 215x102.5x65 mm 215x102.5x73 mm

Ketley Staffordshire Blue Bricks provide unrivalled durability and strength, making them the choice for highly demanding environments. In the early part of the 20th Century this Staffordshire Blue colour was regarded as the ultimate stamp of strength and durability.

Projecting brickwork

The outstanding performance characteristics of Ketley Class A bricks, with their low water absorption makes them particularly suitable for textured facades where more than one face of the brick is exposed to the weather.

Aesthetics

Ketley Staffordshire Blue Bricks have a strong aesthetic appeal. They have a precise form and a distinctive quality which is equally suitable for contemporary projects as well as restorations. Combined with their unrivalled physical properties and range of colour matched specials, they are the ideal material for contrasting detailing in brickwork of less durable clay.

Special Shapes

A complete range of Special Shapes to BS 4729:2005 is available. We also undertake the manufacture of 'non-standard' specials to customers' specification as required. Our specials are fired alongside our squares ensuring consistency of colour across all our special bricks.



Samples: Illustrations in this publication are as accurate as the printing process will permit and will reflect lighting conditions at the time the photographs were taken. To appreciate fully the appearance of the bricks please request samples from our Sales office on **01384 78361** or **info@ketley-brick.co.uk**, these are freely available and will provide a better guide. All our products are made from naturally occurring materials and therefore a certain degree of colour variation is an inherent feature of the products.





Staffordshire Brown Brindle 'Class A' Facing Bricks



Conform to BS EN 771-1: 2011
Class A.
Solid or Perforated.
Uniformly high crushing strength.
Low water absorption.
Resistant to acids, alkalis and abrasion.

Sizes:

215x102.5x50 mm 215x102.5x65 mm 215x102.5x73 mm

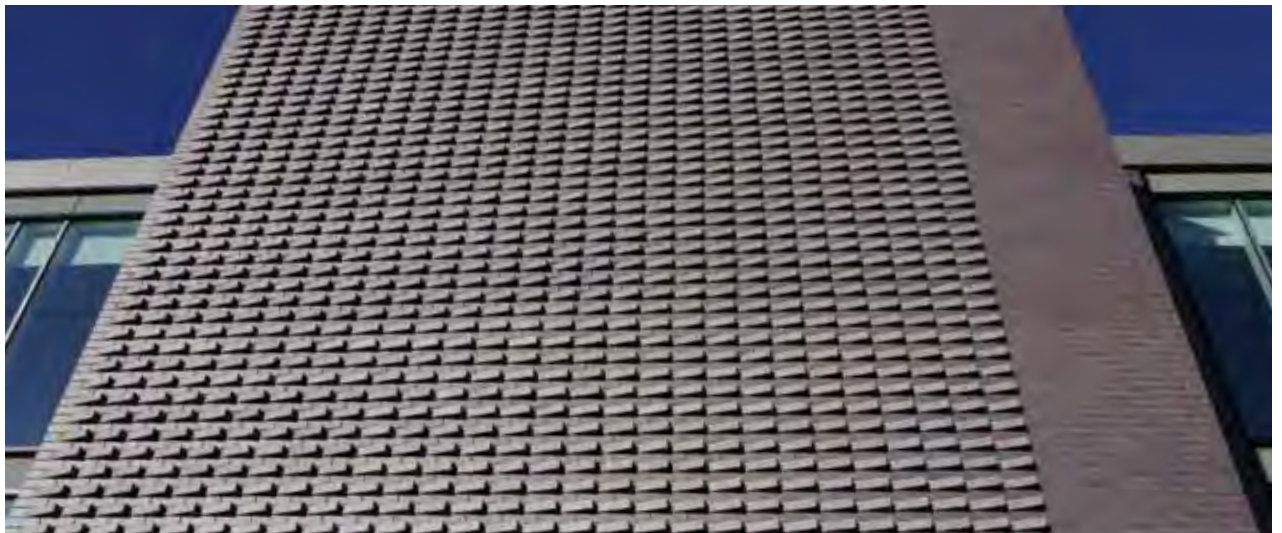
The Staffordshire Brown Brindle colour is manufactured only by Ketley Brick and provides an alternative to Blue as a feature Brick. These bricks are used on a wide range of projects both traditional and modern.

Aesthetics

Ketley Staffordshire Brown Brindle are attractive in larger commercial projects where they create a distinguished and unique appearance. Their unrivalled physical properties and range of colour matched specials makes them the ideal material for contrasting detailing in brickwork of less durable clay.

Applications

Staffordshire Brown Brindle Bricks are suitable for architectural use particularly in commercial developments. Their high resistance to acids, alkalis and abrasion makes them equally suitable for foundations, pickling tanks, chemical works, sewerage schemes, strongrooms, bridges, tunnels, retaining walls, bunker linings and walls.



Samples: Illustrations in this publication are as accurate as the printing process will permit and will reflect lighting conditions at the time the photographs were taken. To appreciate fully the appearance of the bricks please request samples from our Sales office on **01384 78361** or **info@ketley-brick.co.uk**, these are freely available and will provide a better guide. All our products are made from naturally occurring materials and therefore a certain degree of colour variation is an inherent feature of the products.





Staffordshire Red 'Class A' Facing Bricks



Conform with BS EN 771-1: 2011
 Class A.
 Solid or Perforated.
 Uniformly high crushing strength.
 Low water absorption.
 Resistant to acids, alkalis and abrasion.

Sizes:

215x102.5x50 mm 215x102.5x65 mm 215x102.5x73 mm

Ketley natural Red Staffordshire Class A Facing bricks have a deserved reputation for excellence. They are solid or perforated and are a distinct rich red colour especially good for matching properties built during Victorian times.

Applications

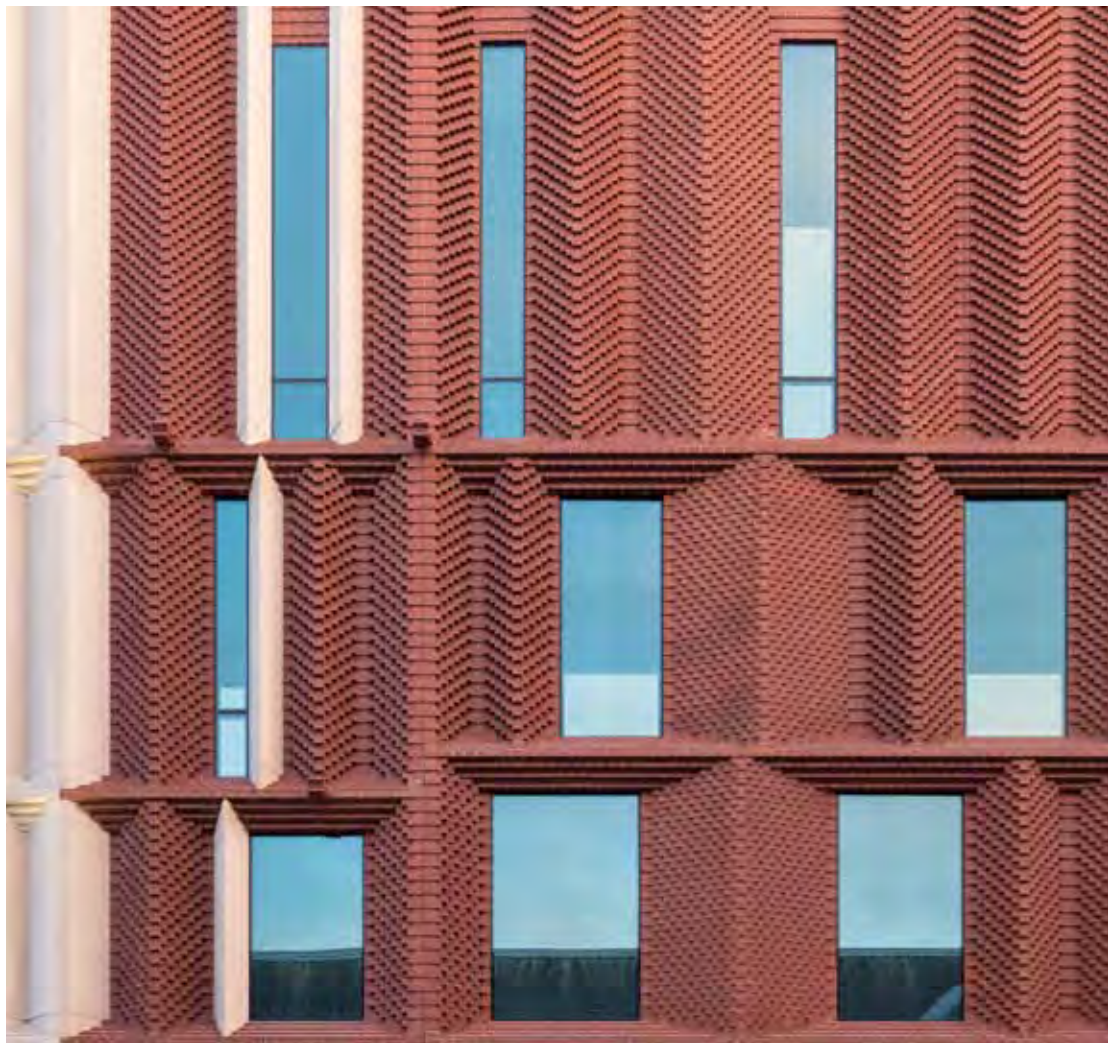
Ketley Staffordshire Reds are frequently used for architectural purposes in commercial developments and for landscaping and structural use in urban renewal schemes and general improvement areas.

They are often used in conjunction with other less durable materials for cappings or copings and to add detail and interest.

Ketley Staffordshire Red Class A bricks are suitable for use in particularly exposed conditions such as the Cheltenham Flood Alleviation Scheme, seen in the photograph above right.



Samples: Illustrations in this publication are as accurate as the printing process will permit and will reflect lighting conditions at the time the photographs were taken. To appreciate fully the appearance of the bricks please request samples from our Sales office on **01384 78361** or **info@ketley-brick.co.uk**, these are freely available and will provide a better guide. All our products are made from naturally occurring materials and therefore a certain degree of colour variation is an inherent feature of the products.



A combination of Ketley brick slips and special bricks were used to create this impressive brick façade at the Victoria Gate shopping centre in Leeds. 2017 Brick Award Winner Best Commercial Building & Best Innovative Use of Brick.



Samples: Illustrations in this publication are as accurate as the printing process will permit and will reflect lighting conditions at the time the photographs were taken. To appreciate fully the appearance of the bricks please request samples from our Sales office on 01384 78361 or info@ketley-brick.co.uk, these are freely available and will provide a better guide. All our products are made from naturally occurring materials and therefore a certain degree of colour variation is an inherent feature of the products.



2016 Brick Award Winner Ketley brick slips and pistols slips at Harvey Nichols

Brick Slips

All colours are available in a smooth, sanded, textured or dragwire finish and with the choice of either a ribbed or dovetail key on reverse.

Ketley Brick's range of extruded brick slips eliminate the need and cost to cut down bricks for use with pre-fabricated panels and other cladding solutions. They have only 30% of the embodied carbon of a traditional cut brick slip and are a highly durable, sustainable and cost effective choice for construction.

Ketley Brick Slips are manufactured from the same clay, using the same processes as the Ketley Class A Engineering bricks and Dreadnought Roof Tiles to deliver the same technical characteristics of very low water absorption, very high strength and unrivalled frost resistance.

Ketley Brick Slips are the sustainable choice to create authentic brick facades for both external and internal applications. All the colours are achieved naturally through the careful control of the kiln atmosphere without the use of surface pigments or artificial stains. This generates a warmth and authenticity to the brick colours which cannot be matched.



Staffordshire Red Sanded



Staffordshire Red Blue Sanded



Staffordshire Light Multi Textured



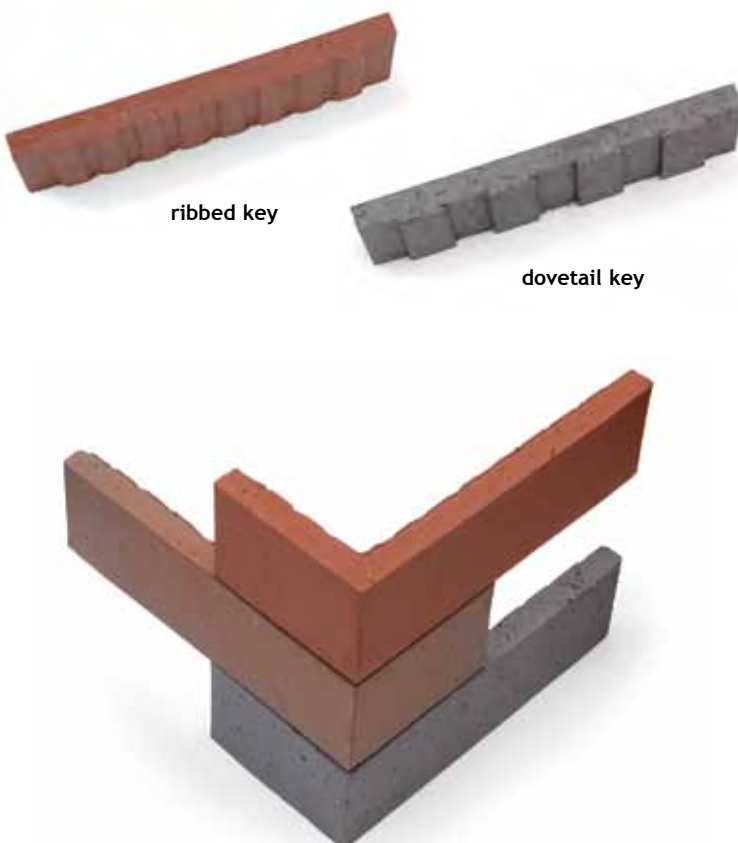
Staffordshire Dark Multi Textured



Staffordshire Brown Brindle Smooth



Staffordshire Blue Smooth



ribbed key

dovetail key



Special Shaped Bricks

The use of Ketley Specials to add a high quality finish to brickwork ensures extra durability and protection to vulnerable areas and will save time on-site by overcoming extensive hand cutting.

Because Special Shaped bricks are generally used in situations of severe exposure such as copings and cills, powerful resistance to water penetration and high durability have always been essential.

Ketley Brick manufactures a wide range of special shaped bricks for a multitude of applications. Most of the European Standard Special Shaped Bricks are supplied and Ketley will also manufacture specials from drawings supplied, allowing imaginative design options and decorative detail to be incorporated, confident that Ketley will be able to accurately match requirements.



Separate Ketley Special Shaped Bricks and Ketley Paver and Fittings brochures are available on request. Please contact our sales office for further details.

Orders for purpose made specials are always welcome at Ketley. A simple three dimensional drawing indicating dimensions and exposed faces can be discussed with our experienced representatives or submitted direct to the factory. Dedicated tooling may be required for purpose made specials and we recommend that discussions are undertaken early in the project. We welcome the opportunity to be included early in design discussions as we can often suggest ways to reduce cost.



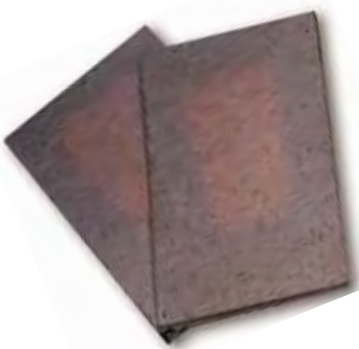
Samples: Illustrations in this publication are as accurate as the printing process will permit and will reflect lighting conditions at the time the photographs were taken. To appreciate fully the appearance of the bricks please request samples from our Sales office on **01384 78361** or **info@ketley-brick.co.uk**, these are freely available and will provide a better guide. All our products are made from naturally occurring materials and therefore a certain degree of colour variation is an inherent feature of the products.



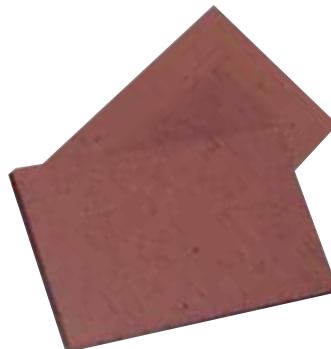
Creasing Tiles

Ketley Creasing Tiles are manufactured from Etruria Marls, which are recognised as the finest clay for strength and durability. Their low water absorption and durability make them ideal for exposed situations, subject to high degrees of weathering and rising or penetrating damp.

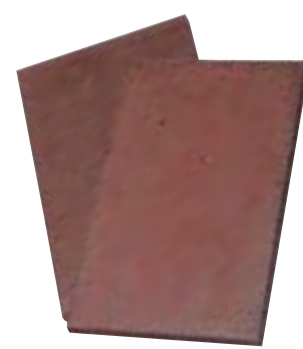
Creasing Tiles are plain clay tiles without nibs or camber and with a thickness of only 11mm, which makes them easier to cut to a high degree of accuracy than a brick. They are commonly used to add decorative finishes to brick and stone work in applications such as; cappings and copings, external cills, corbelling, arches, chimneys and decorative quoins.



Staffordshire Blue Brindle



Staffordshire Red



Staffordshire Brown Brindle

Technical Information

Size: 265mm x 165mm
Thickness: 11mm

There are no standards specifically covering Creasing Tiles, however Ketley Clay Creasing Tiles conform to BS EN 1304: 1998 which covers Clay Roof Tiles and Fittings and they exceed the specification in terms of transverse strength and water absorption.

| | |
|--------------------------|------------------------------|
| Finish | Smoothfaced |
| Weight per tile | 1.05kg |
| Weight per pack | 1.20 Tonnes |
| Number of Tiles per pack | 1000 |
| Transverse Strength | 880N |
| Water Absorption | 3.9% |
| Freeze/thaw resistance | Conforms to BS EN 539-2:1998 |

Laying Instructions

Creasing tiles should be laid with a broken bond and a minimum lap of 75mm. The joint width between creasing tiles should not exceed 10mm in all applications.

When cutting creasing tiles, a mechanical disc cutter is recommended over hand cutting particularly when used in exposed areas, as this will provide a neater appearance and help to avoid cracks that can reduce the performance of creasing tile.

For freestanding walls where creasing tiles are used under brick cappings, two courses of clay tiles should be laid with staggered joints in a 1:1/4:3 mortar and a minimum projection from the wall of at least 45mm.



Brick Award Winner Best Refurbishment & Renovation project, Ace Hotel in Shoreditch with Ketley staffs blue bricks and brick slips

Technical Specifications for Brick Slips

- TYPE:** Extruded Brick Slips
- COLOUR:** Staffordshire Blue / Staffordshire Brown Brindle / Staffordshire Red / Staffordshire Light Multi / Staffordshire Dark Multi / Staffordshire Red Blue
- TEXTURE:** Smooth / Sanded / Textured / Dragwire
- MANUFACTURE:** Extruded
- REVERSE KEY:** Ribbed key to a depth of 2.5mm for 15mm slip or Dovetail (for pre cast concrete applications) key depth 4.5mm for 18mm slip

| Dimensions | Weight | No. per m ² (10mm joints) |
|-----------------|-------------------|---|
| 215 x 65 x 18mm | 0.57 kgs per slip | 60 |
| 215 x 65 x 15mm | 0.45 kgs per slip | 60 |

- Packing:** Banded for fork lift off-loading - 1890 pieces per pallet 18mm
2170 pieces per pallet 15mm
- Weight per pallet:** Weight 1100kg 18mm
Weight 1000 kg 15mm

European Standard BS EN 771-1: 2011

| | |
|-----------------------------|------------------------------------|
| Masonry Unit Group | FL |
| Water Absorption | ≤4.5% |
| Net Dry Density | 2200 kg/m ³ (Typically) |
| Soluble Salt Content | S2 |
| Durability | F2 (Frost Resistant) |
| Fire Reaction | A1 |
| Dimensional Tolerance Mean | T2 |
| Dimensional Tolerance Range | R1 |

A complete range of Special Shapes to BS 4729 2005 is available. We also undertake the manufacture of 'non-standard' specials to customers' specification as required.



Technical Specifications for Bricks

TYPE: Extruded Wirecut Brick Class A
COLOURS: Staffordshire Blue, Staffordshire Brown Brindle, Staffordshire Red
STRUCTURE: Solid or perforated
TEXTURE: Smooth
SIZE: Complies with dimensions and tolerances of BS EN 771-1: 2011

| Dimensions | Weight | No. per m2 (10mm joints) |
|--------------------|----------------------|-----------------------------|
| 215 x 102.5 x 65mm | 3.3 Tonnes per 1,000 | 60 |
| 215 x 102.5 x 73mm | 3.8 Tonnes per 1,000 | 53 |

Packing: Banded for fork lift off-loading - 400 per pack 65mm
 368 per pack 73mm

Weight per pack: 65mm 1320kg solid 73mm 1400kg solid
 65mm 980kg perf 73mm 1070kg perf

European Standard BS EN 771-1: 2011

| | |
|----------------------------------|--|
| Type of brick | Solid |
| Appearance | Blue, Smooth / Brown Brindle, Smooth / Red, Smooth |
| Manufacture | extruded, wirecut |
| Compressive strength | ≥ 125N/mm ² |
| Category | II |
| Masonry Unit Group | HD |
| Engineering Grade | A |
| Water absorption | ≤ 4.5% |
| Initial Rate of Water absorption | ≤ 1.5kg/metre/minute |
| Thermal Conductivity | On Application |
| Bond Strength | 0.15N/mm |
| Net Dry Density | 2200 kg/m ³ (Typically) |
| Density Tolerance | D1 |
| Soluble salt content | S2 |
| Durability | F2 |
| Fire Reaction | A1 |
| Dimensional Tolerance Mean | T2 |
| Dimensional Tolerance Range | R1 |



KETLEY

BRICK

Bricks, Slips and Pavers

Ketley Brick Company Ltd
Dreadnought Works
Pensnett, Brierley Hill
West Midlands, DY5 4TH

Tel: 01384 78361

Fax: 01384 74553

Email: sales@ketley-brick.co.uk

Web: www.ketley-brick.co.uk

Although Ketley Brick Company Limited does its best to ensure that any advice, recommendations or information it may give is accurate, no liability or responsibility of any kind (including liability for negligence) is accepted in this respect by Ketley Brick Company Ltd, its staff or agents. Claims and statements made by Ketley Brick Company Ltd regarding its products refer to those which have been properly handled on site. Ketley Brick Ltd cannot accept any liability of any kind for problems caused by the acts or omissions of third parties or by poor site practice.